

# SCS THIN

600x1200mm

6mm



**SCS**<sup>®</sup> SINTERED  
COMPACT  
SURFACE

  
**Simpolo**<sup>®</sup>  
ceramics

# SCS THIN

COLLECTION 2020

600x1200mm



## Carving Effect

THE SILENT ACHIEVER

'Carving Effect' is a digital application done on the tile surface with high accuracy. It has the ability to surprise you when you put your hands on it and see it from different positions in different light directions. The Carving effect is for the silent achievers, who celebrate without saying it out loud and goes on discovering the path to their success.



## Glue-Art Effect

THE PROFOUND CELEBRATOR

The Glue-Art effect is an application done on the tile surface with glue and granules. With high accuracy, Glue is digitally printed in desired patterns on the tile surface and then granules are pasted on it before it enters the kiln. To some, the final result looks like glass drops and some prefers to call them the dewdrops.

## STRENGTH AND BEAUTY TOGETHER

Simpolo ceramics is pleased to announce a revolutionary concept in Thin Tiles, "SCS THIN TILES". A product of extensive and innovative research this 6mm wonder has all the strength and aesthetics desired from a stone, marble or granite.

our brand  
ambassador  
**Hrithik Roshan**





**Wall**  
Lentigo Dove + HL 1 + Gris  
\_Size : 600x1200mm

**Floor**  
Lentigo Gris  
\_Size : 600x1200mm



Lentigo Dove



Lentigo Bay



Lentigo HL 1



Lentigo HL 2



Lentigo Gris



Lentigo Amber



**Glazed Vitrified Tiles**

**THICKNESS:** 6 mm  
**SURFACE:** Matt



600x1200mm



**Wall**

Plexus Bay + HL 2  
\_Size : 600x1200mm

**Floor**

Plexus Amber  
\_Size : 600x1200mm



Plexus Dove



Plexus Bay



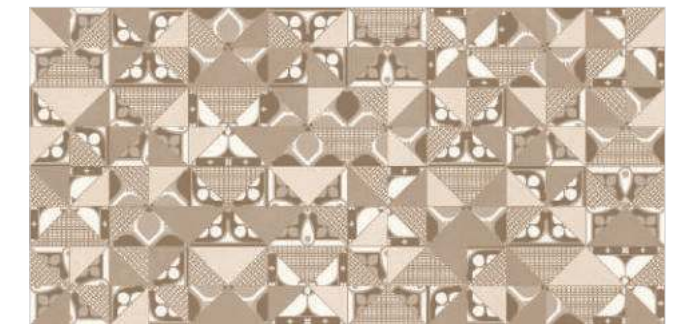
Plexus HL 1



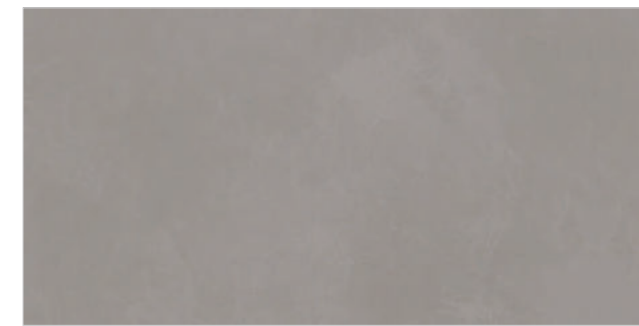
Plexus HL 2



Plexus Decor 1



Plexus Decor 2



Plexus Gris



Plexus Amber



**Glazed Vitrified Tiles**

**THICKNESS:** 6 mm  
**SURFACE:** Matt

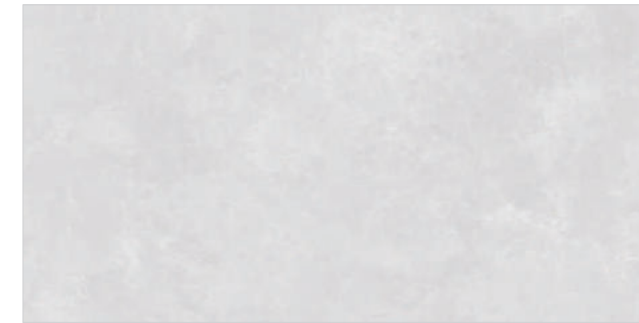


600x1200mm



**Wall**  
Stabile Dove + Decor 1  
\_Size : 600x1200mm

**Floor**  
Stabile Gris  
\_Size : 600x1200mm



Stabile Dove



Stabile Bay



Stabile HL 1



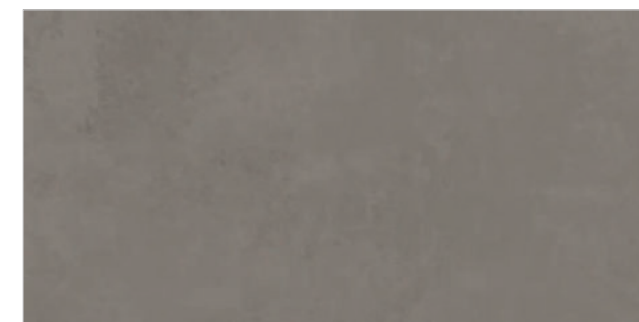
Stabile HL 2



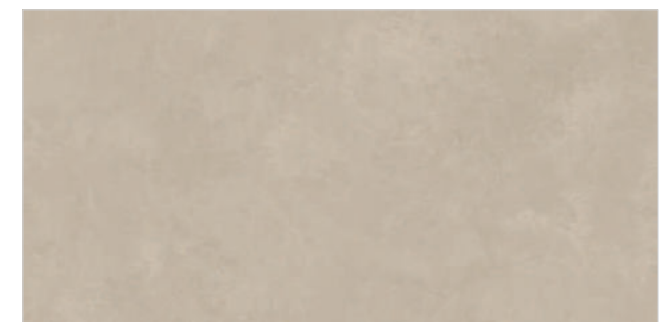
Stabile Decor 1



Stabile Decor 2



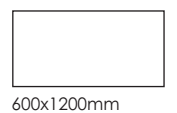
Stabile Gris



Stabile Amber

**Glazed Vitrified Tiles**

**THICKNESS:** 6 mm  
**SURFACE:** Matt





**Wall**  
Regrow Amber + Decor  
\_Size : 600x1200mm

**Floor**  
Regrow Amber  
\_Size : 600x1200mm



Regrow Olive



Regrow Bay



Regrow Decor



Regrow Amber



Regrow Hazel



**Glazed Vitrified Tiles**

**THICKNESS:** 6 mm  
**SURFACE:** Matt



600x1200mm



**Wall**  
 Ingot Navy + Decor 1  
 \_Size : 600x1200mm

**Floor**  
 Ingot Navy  
 \_Size : 600x1200mm



**Glazed Vitrified Tiles**



Ingot Navy



Ingot Decor 1



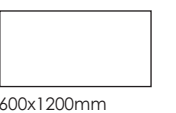
Ingot Rust



Ingot Decor 2



**THICKNESS** : 6 mm  
**SURFACE** : Matt



600x1200mm



**Wall**  
Brickton + Decor  
\_Size : 600x1200mm

**Floor**  
Brickton  
\_Size : 600x1200mm



**Glazed Vitrified Tiles**



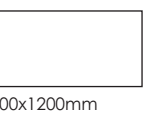
Brickton



Brickton Decor



**THICKNESS:** 6 mm  
**SURFACE:** Matt







Perky White



Perky Decor

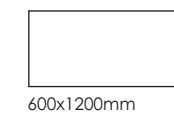


**Wall**  
Perky White + Decor  
\_Size : 600x1200mm

**Floor**  
Perky White  
\_Size : 600x1200mm

**Glazed Vitrified Tiles**

**THICKNESS:** 6 mm  
**SURFACE:** Matt



600x1200mm



**Floor**

Pozzolana Crema  
 \_Size : 600x1200mm



Pozzolana Crema



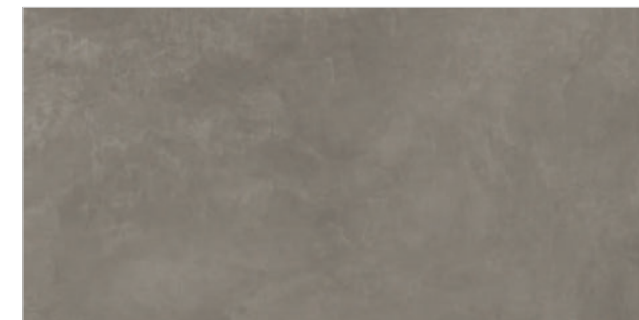
Pozzolana Smoke



Pozzolana Burly



Pozzolana Gris



Pozzolana Tobacco



Pozzolana Nero

**Glazed Vitrified Tiles**

**THICKNESS:** 6 mm  
**SURFACE:** Matt



600x1200mm



**Facade**

Sandstone Ivory + Brown  
\_Size : 600x1200mm

**Glazed Vitrified Tiles**

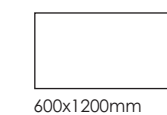


Sandstone Ivory



Sandstone Brown

**THICKNESS:** 6 mm  
**SURFACE:** Rustic



600x1200mm



**Wall**  
Resina Ash + Decor + Grey  
\_Size : 600x1200mm

**Floor**  
Resina Grey  
\_Size : 600x1200mm

**THICKNESS** : 6 mm  
**SURFACE** : Silk Polish



**Glazed Vitrified Tiles**



Resina Ash

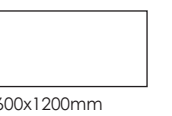


Resina Decor



Resina Grey

**THICKNESS** : 6 mm  
**SURFACE** : High Glossy, Silk Polish



600x1200mm



**Wall**  
Armani Silver  
\_Size : 600x1200mm

**Floor**  
Armani Grey  
\_Size : 600x1200mm

**THICKNESS : 6 mm**  
**SURFACE : Silk Polish**



**Glazed Vitrified Tiles**



Armani Silver



Armani Grey

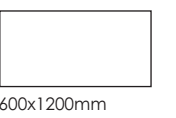


Armani Beige



Armani Bronze

**THICKNESS : 6 mm**  
**SURFACE : High Glossy, Silk Polish**



600x1200mm



**Wall**  
Antolia Bianco  
\_Size : 600x1200mm

**Floor**  
Antolia Grey  
\_Size : 600x1200mm



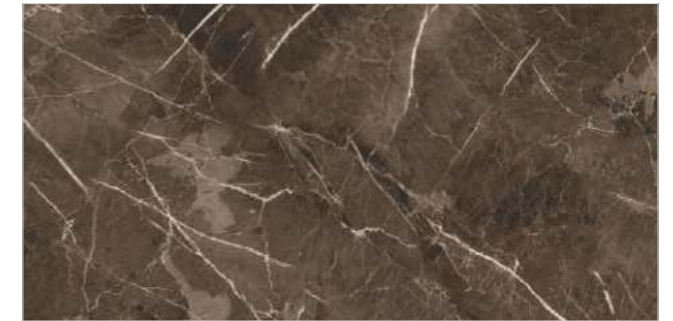
Antolia Bianco



Antolia Crema



Antolia Grey



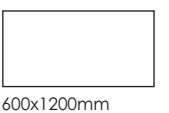
Antolia Coffee



Antolia Nero

**Glazed Vitrified Tiles**

**THICKNESS:** 6 mm  
**SURFACE:** High Glossy, Silk Polish





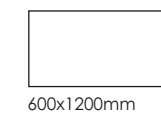
**Wall**  
Statuario  
\_Size : 600x1200mm

**Floor**  
Statuario  
\_Size : 600x1200mm

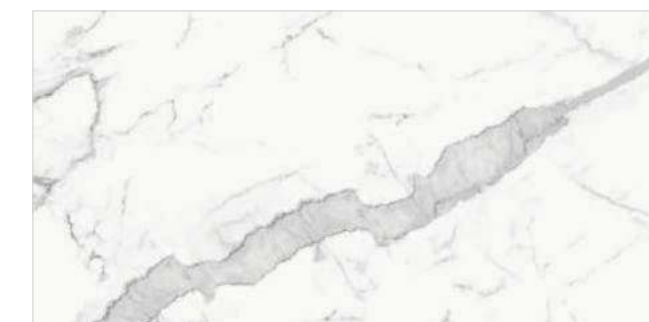
**THICKNESS: 6 mm**  
**SURFACE: High Glossy**

**Glazed Vitrified Tiles**

**THICKNESS: 6 mm**  
**SURFACE: High Glossy**

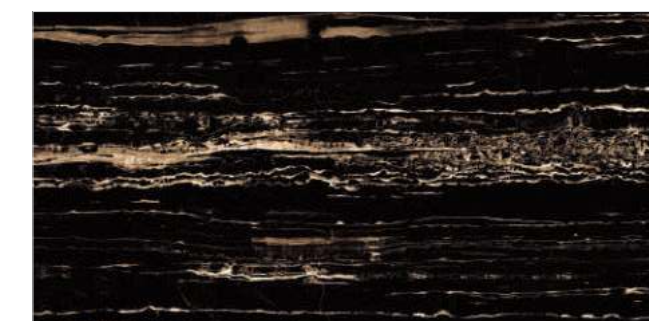


600x1200mm



Statuario

Also Available in Silk Polish



Golden Portoro



Roseton



**Floor**  
 Barcelona Black  
 \_Size : 600x1200mm

**Glazed Vitrified Tiles**



Barcelona Grey

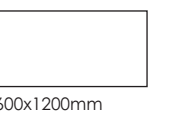


Barcelona Black



Bottochino Beige

**THICKNESS:** 6 mm  
**SURFACE:** High Glossy



600x1200mm



# Stain Test

AS PER ISO 13006:2018 Gr. Bla			R VALUE RAMP TEST
PRODUCT NAME	CATEGORY	CLASS	CLASS**
SCS	GLOSSY	CLASS-5	NO CLASS
SCS	SATIN MATT	CLASS-3	R 9
GVT	MATT	CLASS-4	NO CLASS
PGVT	GLOSSY	CLASS-4	NO CLASS
DRY GRANULA	GLOSSY	CLASS-5	NO CLASS
DRY GRANULA	SATIN MATT	CLASS-4	R 9
SSS	SATIN MATT	CLASS-4	NO CLASS
SSS	GLOSSY	CLASS-3	NO CLASS
COPOS / GRANOS	POLISH	CLASS-3	NO CLASS
COPOS / GRANOS	MATT	CLASS-4	R 9
ROCK DECK	R9	CLASS-4	R 9
ROCK DECK	R10	CLASS-3	R 10
ROCK DECK	R11	CLASS-3	R 11
<b>Class-5 Cleaning Agent:</b>	Water / Hot Water		
<b>Class-4 Cleaning Agent:</b>	Colin/Thinner/Weak cleaning agent (a commercial agent), not containing abrasive, with a pH of 6,5 to 7,5.		
<b>Class-3 Cleaning Agent:</b>	Red Harpic/Strong cleaning agent (a commercial cleaning agent), containing abrasive, with a pH of 9 to 10.		

\* Immediate cleaning action is the best way  
 \* chemicals reference are for first suggestion for any details contact company personnel  
 # do not use these chemicals without considering expert suggestions  
 \*\* The group classification give the parameter for determine the sliding resistance:  
 the group R 9 is less anti-slip, the group R 13 as the maximum effectiveness anti-slipA

# Technical Specification

CHARACTERISTIC	STANDARD AS PER ISO13006:2012/EN14411 Gr.Bla	STANDARD AS PER IS15622:2017 Gr.Bla	MEAN VALUE OF SIMPOLO	TEST METHOD
<b>Regulatory Properties</b>				
Deviation in length and width	± 0.50 %	± 0.10 %	± 0.10 %	ISO 10545-2 & IS 13630-1
Deviation in thickness	± 5.00 %	± 5.00 %	± 4.00 %	ISO 10545-2 & IS 13630-1
Straightness in side	± 0.50 %	± 0.10 %	± 0.10 %	ISO 10545-2 & IS 13630-1
Rectangularity	± 0.60 %	± 0.10%	± 0.10 %	ISO 10545-2 & IS 13630-1
Surface flatness Central Curvature	± 0.50 %	± 0.50 %	± 0.10 %	ISO 10545-2 & IS 13630-1
Surface flatness Edge Curvature	± 0.50 %	± 0.50 %	± 0.10 %	ISO 10545-2 & IS 13630-1
Surface flatness Warpage	± 0.50 %	± 0.50 %	± 0.10 %	ISO 10545-2 & IS 13630-1
Surface Quality	> 95% defects free	> 95% defects free	> 95% defects free	ISO 10545-2 & IS 13630-1
Small Color Difference	ΔE < 0.75	N.A.	No Change	ISO 10545-16
Glossiness (With Nano Polished)	As per Manufacturer	As per Manufacturer	> 90*	Gloss Meter 60°
Glossiness (Without Polished)	As per Manufacturer	As per Manufacturer	7° < GLOSS < 14°*	Gloss Meter 60°
Glossiness (Satin)	As per Manufacturer	As per Manufacturer	15° < GLOSS < 25**	Gloss Meter 60°
<b>Structural Properties</b>				
Water absorption	≤ 0.50 %	≤ 0.080 %	≤ 0.080 %	ISO 10545-3 & IS 13630-2
Bulk density	> 2.00 g/cc	Min. 2.20 g/cc	> 2.28 gm/cc	DIN51082 & IS 13630-2
<b>Massive Mechanical Properties</b>				
Modulus of rupture	Min. 35.0 N/mm <sup>2</sup>	Min. 35.0 N/mm <sup>2</sup>	Min. 37.0 N/mm <sup>2</sup>	ISO 10545-4 & IS 13630-6
Breaking strength thickness <5-6	Min. 700.0 N	Min. 700.0 N	Min. 1000.0 N	ISO 10545-4 & IS 13630-6
Breaking strength thickness ≥7.5	Min. 1300.0 N	Min. 1100.0 N	Min. 1800.0 N	ISO 10545-4 & IS 13630-6
<b>Surface Mechanical Properties</b>				
MOH'S hardness	Min. 4	Min. 5	Min 6**(Matt) / Min. 4** (Gloss)	EN 101 & IS 13630-13
Surface abrasion resistance-Glossy #	As per Manufacturer	Min. Class II	Min. Class 2 / Min. Class II	ISO 10545-7 & IS 13630-11
Surface abrasion resistance-Matt #	As per Manufacturer	Min. Class II	Min. Class 3 / Min. Class II	ISO 10545-7 & IS 13630-11
<b>Thermal Hygrometric Properties</b>				
Moisture expansion	Max. 0.06	Max. 0.02	0.01	ISO 10545-10 & IS 13630-3
Thermal expansion(COE) at 100°C	As per Manufacturer	Max. 7.0 x 10 <sup>-6</sup>	Max. 6.0 x 10 <sup>-6</sup>	ISO 10545-8 & IS 13630-4
Thermal shock resistance	Min. 10 Cycle	Min. 10 Cycle	Min. 10 Cycle	ISO 10545-9 & IS 13630-5
Crazing Resistance at 7.5 Bar	As per Manufacturer	Min. 4 Cycle	Min. 6 Cycle	ISO 10545-11 & IS 13630-9
Impact resistance(COR)	As per Manufacturer	Min. 0.55	Min. 0.55	ISO 10545-5 & IS 13630-14
Frost resistance	As per Manufacturer	As per Manufacturer	Frost Proof	ISO 10545-12 & IS 13630-10
<b>Chemical Properties</b>				
Resistance to Staining Glazed	Min. Class 3	Min. Class I	Min. Class 4/Min. Class I	ISO 10545-14 & IS 13630-8
Resistance to Household Chemicals &Swimming Pool Salts Glazed	Min. Class GB	Min. Class AA	Min. Class GA/Min. Class AA	ISO 10545-13 & IS 13630-8
**Resistance to Low Concentrate Acidand Alkalis Glazed	As per Manufacturer	As per Manufacturer	Min. Class GLB***/Min. Class A***	ISO 10545-13 & IS 13630-8
**Resistance to High Concentrate Acidand Alkalis Glazed	As per Manufacturer	As per Manufacturer	Min. Class GHB***/Min. Class A***	ISO 10545-13 & IS 13630-8
<b>Safety Properties</b>				
Skid resistance(DCOF-DRY)	As per Manufacturer	As per Manufacturer	> 0.40(Matt)# / < 0.30(Gloss)#	ISO 10545-17
Slip resistance(DCOF)( R value )##	As per Manufacturer	As per Manufacturer	N.A.	ISO 10545-17
Determination of Lead & Cadmium Release for Glazed Tiles	As per Manufacturer	N.A.	Dose not yield Pb & Cd	ISO 10545-15
Fire Resistance	As per Manufacturer	As per Manufacturer	Fire Proof	N.A.

\* Glossiness 90% with nano technology  
 \*\* Without nano technology (Unpolished Vitrified tiles)  
 \*\*\* Except Hydrofluoric Acid & it's compound  
 # Glaze tiles Intended for use on floor  
 ## As per customer requirement

# Packing Details

PRODUCT	SIZE	THICKNESS	TILES / BOX	COVERAGE AREA / BOX
SCS Thin	600x1200mm / 60x120cm	6mm	4 pcs.	2.88 sq. mtr. 31.69 sq. ft.





**Simpolo Vitrified Private Limited**

Old Ghuntu Road, MORBI - 363 642. Gujarat, INDIA  
Tele.: +91 2822 241622, E-mail: [customercare@simpolo.net](mailto:customercare@simpolo.net)

---

**MUMBAI**

Simpolo Gallery, Unit No.: 203, 2<sup>nd</sup> Floor, Morya Land Mark 2, Link Road, Andheri (W), Mumbai - 400 053.  
Tele.: +91 22 40167131, E-mail: [mumbai@simpolo.net](mailto:mumbai@simpolo.net)

**AHMEDABAD**

First Floor, 103, Sumel - 2, Near Gurudwara, S. G. Highway, Bodakdev, Ahmedabad - 380 054.  
Tele.: +91 79 400 37222, +91 79 400 52220, E-mail: [ahmedabad@simpolo.net](mailto:ahmedabad@simpolo.net)

**DELHI**

H-139, First Floor, Sector-63, Noida - 201 301, Uttar Pradesh.  
Mob.: +91 93103 90046, E-mail: [delhi@simpolo.net](mailto:delhi@simpolo.net)

**COCHIN**

33/2380 A-A1 NH Bypass, Vysali Bus Stop, Chakkaraparambu, Cochin - 682 032.  
Mob.: +91 93493 39938, Fax: +91 4844 037118, E-mail: [cochin@simpolo.net](mailto:cochin@simpolo.net)

**KOLKATA**

Ground Floor, DB - 52, Salt Lake City, Sector 1, Kolkata - 700 064. (W.B.)  
Mob.: +91 90733 53728, E-mail: [kolkata@simpolo.net](mailto:kolkata@simpolo.net)